

R1200GS Super PillionPlate

Thank you for purchasing a BestRest Products R12GS Super PillionPlate (SPP)!

~The SPP provides a large cargo deck immediately behind the rider, when the stock luggage rack and passenger seat is removed; it cannot be used when the passenger seat is in place.

~The SPP also serves as a mounting platform for any BestRest BackRest, for rider use.

~The SPP can be used with or without the stock BMW luggage rack or a BestRest CargoRest.

~The SPP protects the silver finish of the stock tailpiece against abrasion from a duffel bag or other cargo.

~The SPP provides a mounting platform for a Pelican case, fuel cell, or other hard cargo.

~The SPP comes in two versions:

Tapered version for BMW system cases or solo riding without panniers

Rectangular version works with Jesse, Happy Trails, Touratech & other aftermarket pannier systems.

If you have problems with installation or operation of this product please call us at the number on the letterhead. May the Good Lord watch over you and keep you safe as you travel the world on your motorcycling adventures. Ride safe and God bless! - David & Judy Petersen

Tools needed for installation:

10mm wrench

8mm wrench

Assorted Torx wrenches

3mm hex wrench

5mm hex wrench

Blue (semi-permanent) Loctite® or similar

Scotch® tape (cellophane tape or similar)

The parts package contains:

A. 1 - R12GS SPP (tapered or rectangular)

B1. 4 - M5x16 button socket screws

B2. 4 - M5x16 hex head screws

C. 2 - 6x20 socket head cap screws

D. 8 - M5 nylon locknuts

E. 1 - M6 nylon locknut

F. 8 - #10 small flat washers

G. 1 - #12 medium flat washer

H. 5 - 5/8" dia. large flat washers

I. 7 - 1" dia. large washers ¼" hole

J. 1 - 1" dia. large flat washer 7/16" hole

K. 2 - rear hooks (one left and one right)

L. 1 - rear angle (short piece with long legs)

M. 1 - front angle (long piece with short legs)

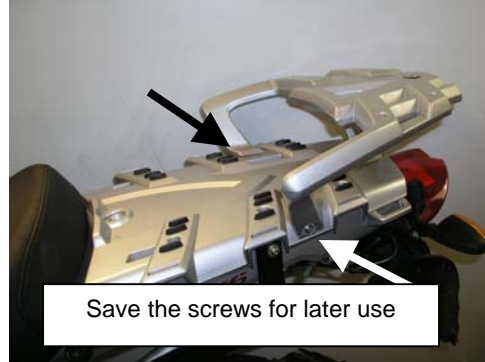
See last page for a helpful washer ID guide

Separate all the parts by size and description. We will be referring to the parts by the above lettering system ITEMS A-M.

INSTALLATION

Read all the instructions BEFORE YOU BEGIN. Don't skip any steps.

Step 1. Remove the passenger seat. Next, remove the stock luggage rack. To do this remove the screws on both sides of the rack where the grab handles meet the frame.



Remove the screw in the center of the rack and the luggage rack can be removed.

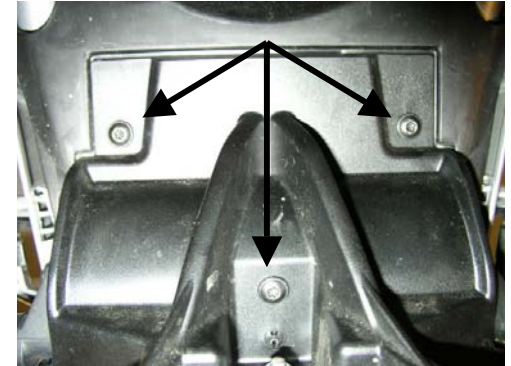


Leave the recessed metal bushing in the tail assembly. It's hiding below this bracket.



Step 2. Install the "rear hooks", ITEM K. They'll fit in the spaces marked by arrows.

Look on the underside of the wheel well, just in front of the taillight. Using a Torx wrench tool kit, remove the 3 screws holding the assembly in place. The front of the motorcycle is at the top in this photo, the rear is at the bottom.

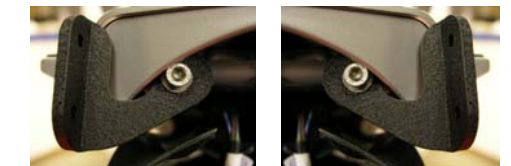


When you've removed the last screw, the taillight assembly will drop down. Let it hang by the wiring harness as you complete the rest of the installation.



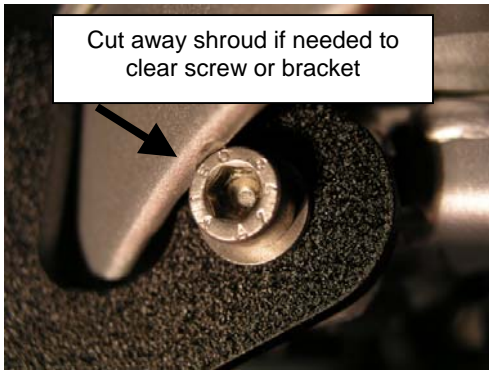
Using a Torx wrench, remove the two screws shown above, in the ends of the frame.

From your parts package obtain ITEM K, the left and right hooks, ITEM C two M6x20 screws, and ITEM H two 9/16" flat washers. **Use blue Loctite® on these screws.**



Tighten both screws loosely so the Hooks don't swing down. The bent angles should be pointing vertically. Don't tighten fully at this time.

Note: Depending on your motorcycle, you may find that the heads of the screws are a tight fit against the plastic shroud of the tail assembly. One of the screws on our prototype model fit easily but the other screw was in contact with the shroud. This is considered normal and is a function of BMW's manufacturing tolerances. Just make sure you don't cross-thread the screw as you tighten it. If you can't get the screws in the holes because they're hitting the shroud you may need to cut away a small portion of the shroud.



Cut away shroud if needed to clear screw or bracket

Step 3. Attach the bent angles to underside of SPP. Turn the SPP upside down.

Place ITEM L on the rear of the SPP. The scallop cutout should face toward the BestRest cutout. Use two M5x16 screws, ITEM B1, with washers and nuts, ITEMS F and ITEM D, to attach the angle. Tighten the nuts loosely, do not tighten fully at this time



Use washers under the heads of the screws & nuts to protect the finish

Place ITEM M on the center of the SPP, in front of the BestRest cutout. The short arms are bent at an angle. Place the angles so the arms are wider at the front, and narrower at the rear. If you mount them backwards they won't fit on the bike. Use ITEM B two M5x16 screws, with ITEM F washers and ITEM D nuts, and, to attach the angle. Tighten the nuts loosely, do not tighten fully at this time.

Step 4. Attach latch stud to front of the SPP.

You can reuse your seat latch stud from your passenger seat, or you can order a latch stud from BestRest (\$20). If you decide to reuse your passenger seat latch stud follow these steps:

Turn the seat over and remove the latching stud at the front.



There's a flat spot on the stud, just below the cone. Use a 10mm wrench to turn the shaft counter-clockwise to loosen and remove.

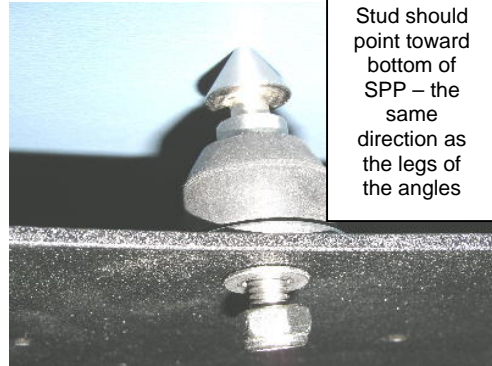


Place the passenger seat in a safe place for storage. When you want to replace the seat you'll need to reinstall this stud.

Lay out the SPP, the seat latching stud, the 1" large flat spacing washer with 3/8" hole ITEM J, the medium washer ITEM G, and the locknut ITEM E.



7. Put the spacing washer on the stud and pass the stud UP thru the small round hole in the front of the SPP, which is in the center of the curved cutout. Put the small washer on the threads of the stud, followed by the locknut.



Stud should point toward bottom of SPP – the same direction as the legs of the angles

Hold onto the rubber grommet and stud with one hand and use the 10mm wrench to tighten the nut. Use common sense and do not over-tighten; remember that when you want to reinstall the passenger seat you'll need to loosen this nut. Tighten it snugly but don't get carried away!



If you ordered a latch stud from BestRest, you do not need to use ITEM J, instead you'll

use only the washer and the locknut. Note that the styles of rubber bushings on the BestRest stud are different than the BMW rubber bushings.

At this point you've installed all the parts on the SPP.

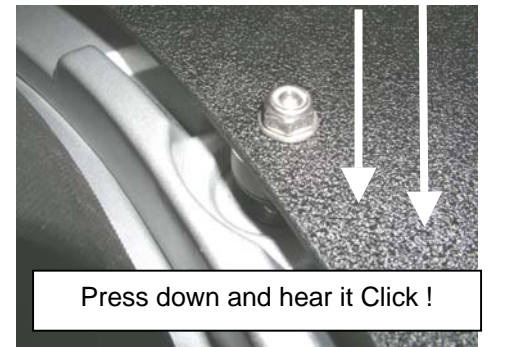
Step 5. If you have Jesse panniers you'll need to use five (5) ITEM I washers stacked between the mounting bracket and the underside of the SPP. We used clear cellophane tape to hold the washers together in a roll during the assembly process.



Step 6. If you have Touratech panniers you can skip Step 5 (above). Instead stack seven (7) ITEM I washers together and tape them in place so they don't fall apart.

Step 7. Place the SPP on the motorcycle. Turn it over so the stud and angles are pointing down. As you fit the SPP, the legs of the front angles should line up with the bushings on both sides of the frame, and the legs of the rear angles should line up with the rear hooks.

At the front, align the seat latch stud at the front of the SPP with the latching hole, and press downward until you HEAR and FEEL the latch engage. The front of the SPP may bow downward slightly; this is normal.

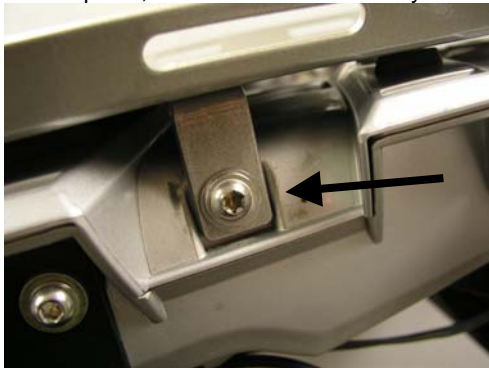


Press down and hear it Click !

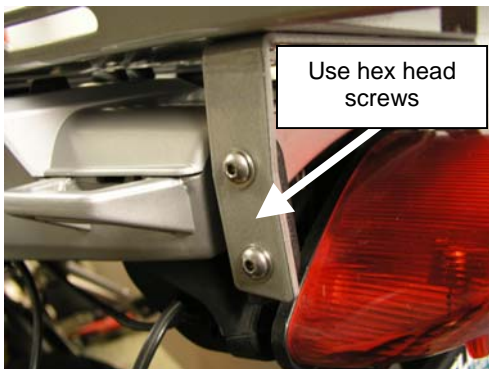
At the rear, fit the screw that originally held the luggage rack in place. This screw should fit down thru the stacked washers you taped in place on the tailpiece. Use ITEM H washer on the screw to protect the finish of the SPP.

Tighten the screw loosely, don't tighten fully.

At the sides, use **ITEM H** flat washers and the two screws that originally held the grab bars in place, and fit the screws loosely.



At the rear, use **ITEM B2** four (4) M5x16 hex head screws, and **ITEM F** eight (8) small washers, and **ITEM D** four (4) locknuts to attach the legs of the rear angle to the left and right hooks. Tighten loosely.



Step 8. Tighten all screws, nuts, and other hardware. Use common sense and tighten them securely, but not so tight as to strip any threads.

When tightening the small button head cap screws hold the hex wrench in place while you tighten the nut. If you don't do it this way you may strip the head.

Double – check your work and inspect all parts and pieces.

Remember to tighten the screws that hold the rear hooks in place.

Step 8. Replace the taillight assembly. Contact between the black plastic housing at the top of the taillight assembly and the lower edge of the two Hooks is normal and will not affect performance.

Step 9. Load your cargo. The SPP has been tested with loads exceeding 150 lbs.

For liability reasons we do not recommend carrying any loads exceeding 75 pounds.

(The company's attorneys made us say this)

The SPP is now ready for you to load your cargo. Tie-down slots at the front and back allow you to strap your cargo fore-and-aft. Use the slots on the side of the frame for lateral strapping.

When loading the bike follow these rules:

- Keep loads as low as possible.
- Keep loads as far forward as possible
- Use nylon webbing for tie-downs
- Avoid the use of rope or elastic bungee cords
- Rok-Straps are acceptable alternatives
- Secure all straps and cargo to prevent loss
- Improper loading can result in safety hazards

REMOVING THE SPP

When you want to remove the SPP and replace the passenger seat, you can leave the rear hooks in place.

Remove the two screws holding the legs of the front angles to the frame.

Remove the 4 screws and nuts holding the legs of the rear angles to the rear hooks. Leave the rear hooks in place if desired.

Remove the screw at the rear that holds the SPP to the frame. Save the stacked washers.

Turn the key in seat latch lock to release the latch stud.

Lift the SPP upwards and free from the bike.

Reinstall the seat latch stud in the passenger seat.

Reinstall the stock luggage rack.

INSTALLING A BestRest BackRest

Classic2 and EZRest BackRests:

If you have one of these BackRest in hand at the time of original installation of the SPP, install the BackRest before you mount the SPP to the motorcycle.

If the BackRest comes along later, remove the SPP. Use screws, washers, & nuts from the BackRest parts kit to attach the BackRest to the SPP. Tighten fasteners securely. Reinstall the SPP on the motorcycle.

Classic1 and Sprint BackRest

Remove the SPP. Mount the long stainless steel sub-frame bar to the underside of the SPP. Make sure the bar is mounted with the correct side UP (we mark the bars for you). Reinstall the SPP on the motorcycle.

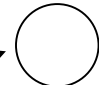
Insert the hooks of the BackRest into the square slots in the SPP and move the BackRest rearward 3/8".

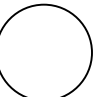
Use two **M6x20mm** screws and the split ring lock washers and flat washers from the BackRest parts kit to hold the BackRest onto the SPP. Tighten securely.

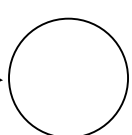
Do not deviate from the specified screw lengths or washer specifications. Use of other screws may damage the tailpiece, or may cause failure of the threaded fittings holding the BackRest. With the PillionPlate in place, look on the underside of the plate to make sure the screws aren't in contact with the motorcycle frame. Use shorter or longer screws if necessary. Contact BestRest.

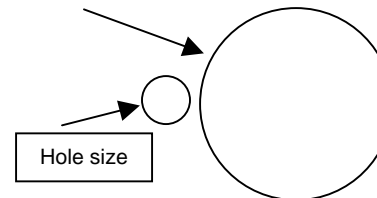
WARNING: As part of your daily pre-ride inspection, check that the seat latch stud is firmly engaged. Inspect the SPP for signs of fatigue or damage. Check the screws and fittings that hold the SPP to the motorcycle and the screws and fittings that hold the BackRest to the SPP. Tighten or adjust if necessary. Remove from service if you observe signs of fatigue, wear, or other damage.

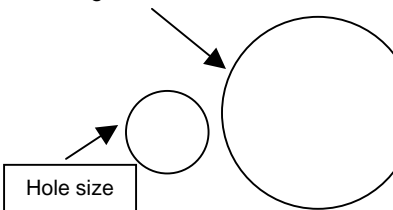
Helpful washer identification guide:

F. 8 - #10 small flat washers 

G. 1 - #12 medium flat washer 

H. 5 - 5/8" large flat washers 

I. 7 - 1" large washers 1/4" hole 

J. 1 - 1" dia. large flat washer 3/8" hole 

SuperPillionPlate, BackRest, Sprint BackRest, EZRest, and Classic and Classic2 BackRest are all trademarks of BestRest Products. "BestRest" is a registered ® trademark of BestRest Products, LLC.

©2006 BestRest Products LLC
Rev. 04-06-2006
All rights reserved.