

R1200GS Adventure FitKit For Model T CargoRest ONLY (CargoRest Sold Separately)

The FitKit allows you to carry large bulky loads weighing up to 30 lbs. Use care not to overload the CargoRest or you may experience handling problems and place extra stress on the motorcycle frame.

Thank you for purchasing a BestRest FitKit. We truly appreciate every order. If you have problems with installation please call us at the number above or send us an email.

May the Lord God bless you, watch over you, and keep you safe as you travel the world on your motorcycling adventures.
David & Judy Petersen

Requirements for installation:

The stock BMW R1200GS Adventure luggage rack must be in place on the motorcycle.

Tools needed for installation:

10 mm box wrench
8 mm box wrench
3mm hex wrench
Loctite Blue (semi-permanent thread compound)

We recommend using Loctite on all threads and screws for additional strength and security.

Your parts package should contain:

2 - FitKit Struts, one left, one right
1 - FitKit Clamping Plate

4 - 5x30 mm button head cap screws
8 - #10 small washers
4 - 5mm nylon locknuts

4 - 6x16 mm hex cap screws
8 - #12 washers
4 - 6mm nylon locknuts

You will also need these parts from your Model T CargoRest kit:

6 - 5x16 button head cap screws
12 - #10 small washers
6 - 5mm nylon locknuts

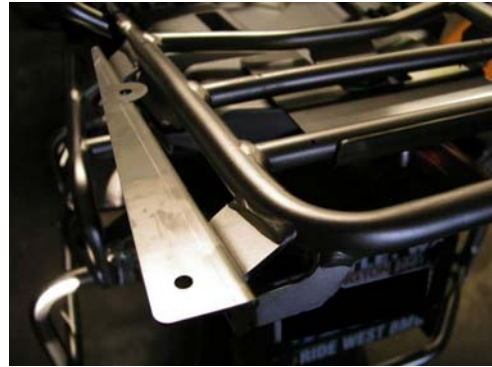
Take a few minutes and separate the items and organize the hardware. This will save time later.

Installation

Read and follow these instructions very carefully. Improper installation may result in damage to your motorcycle or personal injury. Do not attempt installation unless you can perform it in a safe and professional fashion.

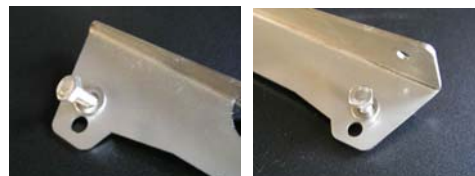
Check to determine that the BMW luggage rack has been properly installed and that all fasteners and fittings are properly tightened. Inspect for signs of stress, fracture, bending, or other failure. If any of these are found, return the motorcycle to your dealer for repair or replacement. Do not attempt to mount the BestRest FitKit if the BMW luggage rack is damaged, defective, or improperly installed.

Mount the left and right struts to the stock luggage rack; note that the front of the strut is the narrow, tapered end.

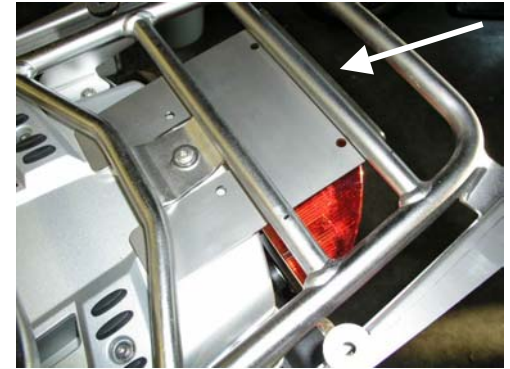


Use a single 6x16 hex screw at the front and back to attach the left and right struts to the luggage rack. Finger tighten loosely, do not fully tighten at this point.

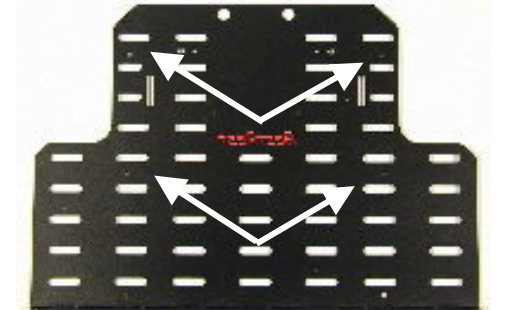
Note: Place the screws in the **UPPER HOLE** of the bracket. This position provides more strength. If you anticipate extreme conditions you can purchase additional screws and fill all 4 holes, but for normal applications we found this wasn't really necessary.



From your parts package, temporarily place the clamping plate on the underside of the stock luggage rack so you see how it fits. Note how it clears the center luggage rack mounting point. The bent angle at the rear of the clamping plate should be pointed UP, and should be in contact with the rear of the crossbar of the rack. The clamping plate will be installed after the Model T has been mounted to the rack. Set it aside for now.



If your Model T CargoRest already has the structural rails attached, remove the two front screws that hold the rails in place. Leave the screws at the rear, but loosen them slightly.



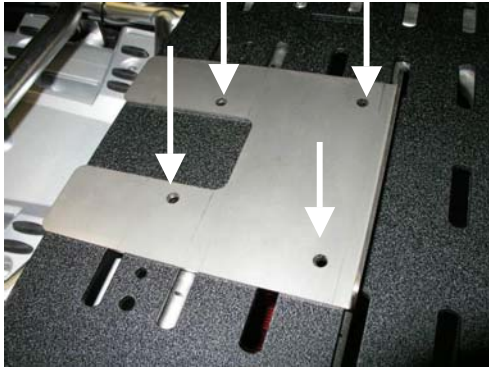
If your Model T does not have the rails attached, follow the assembly instructions that came with the kit, but attach only the single screws at the rear. Leave off the screws in the middle and at the front as shown by the white arrows above.

Place the Model T onto the left and right struts, and align the holes in the Model T with the holes on the top of the struts. The struts will nest on the bottom inside of the angles

Place 5x16 screws (with washers) down thru the holes of the CargoRest, and into the holes of the struts. Put a washer and locknut on the screws. Finger tighten only (for now).



Take the clamping plate again and place it on top of the CargoRest, with the bent angle at the rear pointing up. Note how the 4 holes of the clamping plate align with the holes of the CargoRest. Place the clamping plate on the underside of the stock luggage rack.



Use the four 30mm screws (with washers and nuts) to attach the clamping plate from the underside.



Note to BackRest users: If you plan to use a Classic2 or EZRest BackRest, now's the time to install it. You can still do it later, but you'll need to remove the 30mm screws holding the clamping plate to the underside of the stock luggage rack. Place the screws down thru the holes in the lower plate of the BackRest, thru the CargoRest holes, and thru the clamping plate holes, then put on the washers and locknuts.

The clamping plate provides additional structural integrity necessary for proper dispersal of cargo loading forces, and for safe operation of the BackRest. Do not fail to install the clamping plate for any application.



Above photo shows the EZRest on the surface of a prototype Model T CargoRest.

The Classic2 BackRest mounts in the same fashion, using the 4 long 30mm screws. Sorry, the Sprint BackRest will not work with this R12GS Adventure FitKit application.

Make sure all parts align and fit without undue tension or conflict. Jiggle the parts gently to find the natural resting place of each part, then tighten **ALL** the screws and nuts. Use common sense and do not over-tighten or you'll snap the screw heads or strip the threads. We do not provide torque values, but "gently firm" works well for us.

Note: When tightening the small button head cap screws be careful that you don't strip the head. Final tension should be accomplished by holding the hex wrench in place while tightening the nut below.

Installation is complete!

After riding approximately 200 miles, check all the nuts and screws for proper tightness. Re-tighten all parts if necessary.

As part of your daily pre-ride check, always inspect the CargoRest and FitKit mounting system. Remove the CargoRest from service if you observe any stress points, fractures, missing or loose screws, nuts, or other indications of fatigue or failure.

Using the Standard PillionPlate

The R12GS Standard PillionPlate will work with this application. It will provide you with a sturdy cargo platform in place of the passenger seat, and will provide a mounting point for a BackRest for the Rider. Install the PillionPlate per the instructions in the kit. Sorry, the Super PillionPlates will not work with the Model T CargoRest.

Using Passenger Seat

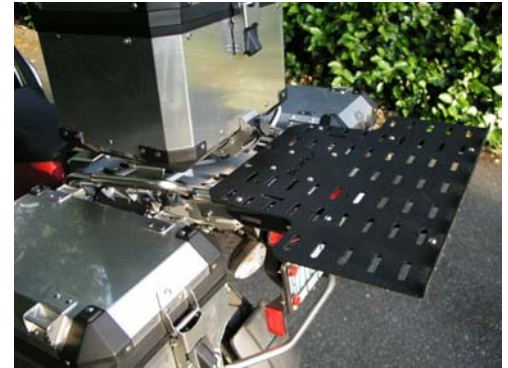
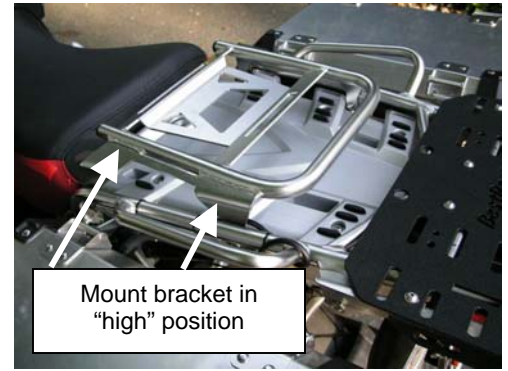
The R12GS Adventure and Model T CargoRest FitKit will work with the stock passenger seat and/or the BMW TopCase. Install the passenger seat as usual.



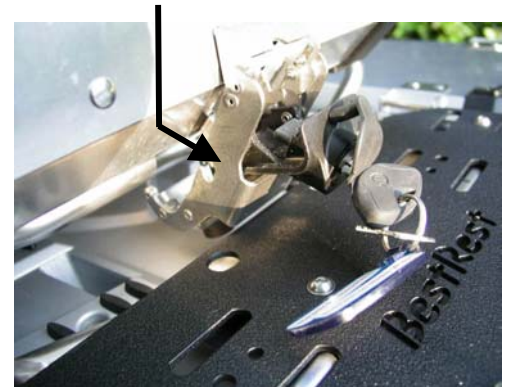
Using the BMW TopCase

When using the TopCase you must first have the BMW TopCase mounting kit, which is available from your local dealer. When

mounting the TopCase bracket in the place of the passenger seat, fit the bracket in the "highest" position, not the low position.



When mounting or removing the TopCase and when operating the lock assembly, you may need to partially latch/unlatch the lock assembly to achieve proper clearance when installing or removing the TopCase. You may need to experiment a bit to get the hang of it, but it does clear the CargoRest.



Cargo Loading Notes

Your CargoRest is designed to handle large, bulky loads. We've successfully tested the CargoRest under the most extreme conditions with VERY heavy loads. However, because the CargoRest sits on the stock rack and frame, we must honor BMW's maximum rear cargo rack load capacity. Refer to your Owner's Manual for official loading limits.

Refer to your BMW owner's manual for luggage loading recommendations.

Loading the CargoRest beyond manufacturer's recommendations may void

the manufacturer's warrantee, may result in handling problems, may cause handling problems, and can raise other safety issues.

Tail Light Visibility From The Rear

The Model T CargoRest projects behind the tail light approximately 12". It is several inches above the tail light and therefore does not normally block another driver's view of the tail light under normal conditions. The exception would be if the other driver is in a cab-over style vehicle located about a motorcycle-length behind you. Keep this in mind when an annoying "tailgater" is following too closely or when riding in city traffic – their view of your tail light may be partially (or fully) obscured. Once you've installed the Model T on your Adventure, take a look from behind and you'll see what we mean. This view was taken from 6 feet behind the bike – you can still see the tail light lens.



Caring for your FitKit and CargoRest

The FitKit is crafted from stainless steel and does not need any maintenance or special care. The CargoRest has a UV resistant powder coat polyester paint. Wash with a mild auto detergent and water. Touchup of minor blemishes may be done with black marker pen or black high quality automotive enamel. Do not use abrasives, solvents, or harsh chemicals when washing or cleaning. Do not use paste wax or other coatings that leave a whitish residue when they dry. We recommend 'Mother's Back-To-Black' or 'Protect-All' brand products to keep your CargoRest looking new.

Structural Rails (Angles)

Models T CargoRests has aluminum structural rails (angles) mounted on the underside of the CargoRest deck. Do not remove these rails or the load carrying capacity will be adversely affected.

Safety & Legal Notices

Do not proceed with product installation unless you are qualified to complete the installation in a safe fashion and as described herein. Do not use these products unless you have read all instructions and understand

how these products work and what limitations, if any, they may have.

It is the responsibility of the Consumer to evaluate the suitability of these products for personal use. Consumers must evaluate whether these products meet their needs and whether these products can be mounted and used in a safe fashion. The Consumer accepts full and complete responsibility for selection of products and for mounting and maintenance of these products. The Consumer agrees to follow and abide by any and all instructions, warnings, recommendations, or other information supplied or published by BestRest Products.

It is the Consumer's responsibility to inspect all screws, fasteners and fittings on a daily basis, tighten or replace them as necessary, and to regularly inspect the entire BestRest CargoRest and mounting hardware for signs of missing parts, excessive wear, metal fatigue, or imminent failure. Should any of these be observed the assembly should be removed from the motorcycle and not used until inspected and repaired by BestRest.

BestRest Products, its employees, agents, and owners assume no liability whatsoever for property damage, personal injury or other losses resulting from the Purchaser's failure to properly maintain the products, for unauthorized modifications of any kind, for use of unauthorized parts (including bushings, screws, pins, or other fasteners), or for use of any BestRest Product in a fashion not intended by BestRest or described as a suggested application in BestRest literature.

Because installation of these products is done by others outside our control, we cannot assume any liability or responsibility whatsoever for improper or unsafe installation, or installation which is contrary to published instructions, for products that are improperly secured or maintained, or that are improperly tightened or otherwise secured, or which are otherwise improper fitted to the motorcycle.

Authorized Repairs and Parts

Only authorized, and approved replacement parts, assemblies, nuts, washers, screws, fasteners or fittings may be used when mounting, installing, or repairing any BestRest Product. Authorized replacement parts may be purchased only from BestRest Products. Parts from other sources or vendors are not covered under warrantee and will void any Consumer claims against BestRest or others. Any use, modifications, or applications of any BestRest Product, other than those authorized by us in writing, are specifically prohibited.

For full legal disclosures and a description of our warrantee, please refer to our website:

www.bestrestproducts.com

'BestRest', 'BestRest System', 'BestRest-GS', 'BestRest Products', 'BackRest', and 'CargoRest', 'BackPad', the motorcycle design and triangle logo are all trademarks of BestRest Products, LLC. The BestRest System is patented under US and international laws, 09/917,528. Please respect our Trademark, Copyright and Patent rights.

©2006 BestRest Products LLC 06-26-2006
All rights reserved.

For more photos of the installation and assembly process, visit our SmugMug photo repository:

<http://bestrest.smugmug.com>