

# BestRest Products, LLC

6908 - 220th St. SW

Mountlake Terrace, WA 98043

(425) 673-1023

fax(425) 673-0502

<http://www.bestrestproducts.com>  
e-mail: [bestrestproducts@aol.com](mailto:bestrestproducts@aol.com)

## R11xxGS SkidPlate

**Fits the following models:**

**R1100GS - R1150GS  
R1150GS Adventure**

Thank you for purchasing a BestRest GS SkidPlate! If you have problems with installation or operation of this product please call us at the number on the letterhead.

Ride Safe and God Bless!  
David & Judy Petersen

Tools needed for installation:

- 1 - slotted screwdriver
- 1 - 10 mm wrench (or)
- 1 - 3/8" wrench

Inspect your package. It should contain the following:

- 1 - GS SkidPlate
- 2 - U-clamps
- 4 - 10-32 truss head screws
- 4 - 10-32 nylon locknuts
- 4 - #10 flat washers



The GS SkidPlate is designed to protect the underside of your center stand, your catalytic converter (or other exhaust collector), and the underside of the transmission.

Upon contact with a log, rock, or other obstacle, the SkidPlate's tapered design and formed edges prevent rearward or lateral movement of the plate. Under most conditions, the motorcycle will easily slide off the obstacle with no damage to the motorcycle. (Please don't use this as an excuse to go rock bashing!)

### INSTALLATION

1. Place the motorcycle on the center stand. Make sure it's properly balanced and won't tip or fall, because you'll be working under the motorcycle.

2. Clean the center stand of all foreign material.

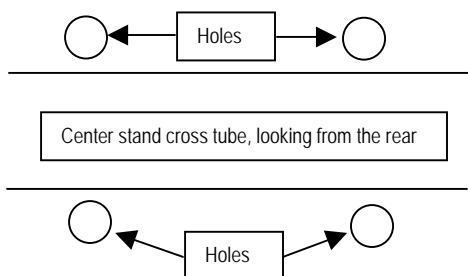
3. Place the SkidPlate on the front of the center stand. The bent edges point toward the rear of the motorcycle.

4. The outer edges of the SkidPlate wrap around the outer tubes of the center stand.

5. The top of the SkidPlate will be about 2" below the hinge point of the center stand.

6. The bottom of the SkidPlate will be above the feet of the center stand, and above the side lever used to raise or lower the center stand.

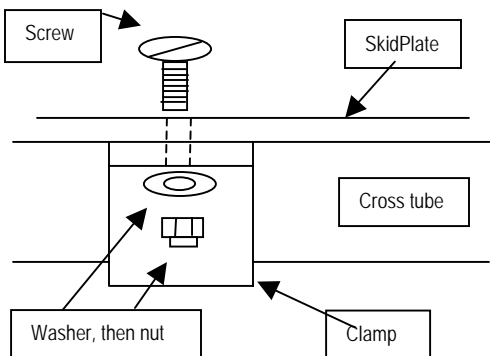
7. Proper vertical alignment is achieved when the 4 mounting holes are equidistant (above and below) the center stand cross tube. Sketch shows holes in relationship to cross tube, looking forward, not to scale.



8. Place the screws through the holes in the SkidPlate. Do not use a washer under the head of the screw.

9. From the rear, place the U-clamps over the cross tube and onto the screws.

10. Place a washer on each screw, followed by a locknut. Tighten loosely. Sketch shows placement of screws, clamps, washers, and nuts, looking down.



11. Check alignment. The SkidPlate should be resting flat against the tubes of the center stand, and should be as far down as the clamps will allow. Next photo shows the correct configuration:



12. Take the motorcycle off the center stand and place it on the side stand.

13. From both sides of the motorcycle, check that the center stand retracts completely, and that the SkidPlate is not in contact with the frame, the center stand springs, or other parts of the motorcycle.



(Photo shows the underside of an 1100GS. On the 1150GS and the Adventure the SkidPlate fits much closer to the catalytic converter and the gap between the stock pan and the SkidPlate is minimal.)

14. Correct any misalignment as required.

15. Place the motorcycle back on the center stand and tighten all screws and nuts completely.

Installation is complete!

Maintenance is not normally required, other than occasionally checking that the screws and nuts have not come loose.

When washing the motorcycle, hose off any accumulations of dirt or mud that may have collected on the backside of the SkidPlate.

Over time the SkidPlate will develop a "patina", caused by flying gravel, road debris, rocks, sticks, etc. This is normal and is evidence of the protection afforded by the SkidPlate. If it wasn't there to take the hits, your center stand, cat, and transmission would've suffered instead.