

## Puck-UP™

### Adjustable Oversized Sidestand Extension for BMW F800GS

Thanks for purchasing a **Puck-UP™**. We truly appreciate every order. If you have problems with the installation please call us at the number above or send us an email. May the Lord God bless you, watch over you, and keep you safe as you travel the world on your motorcycling adventures.

David & Judy Petersen

### Safety Warnings

#### Please read these warnings. They're for your safety.

Installing this product incorrectly could result in a sidestand that is unstable. If this occurs the motorcycle could fall over and cause bodily injury to you or others, or cause damage to the motorcycle.

Use care when selecting a suitable parking surface. Although the **Puck-UP™** provides an oversized footprint and compensates for the lean angle problems inherent with the stock sidestand, BestRest cannot guarantee that the **Puck-UP™** will provide a stable platform under all conditions. Use common sense.

When deploying the **Puck-UP™**, lean the motorcycle slightly to the RIGHT, and then extend the sidestand fully. Once extended, lean the motorcycle back to the left and allow the **Puck-UP™** to contact the ground.

When retracting the **Puck-UP™**, lean the motorcycle slightly to the right before you attempt to retract the sidestand.

The **Puck-UP™** has a series of nylon bushings that extend the height of the **Puck-UP™** to compensate for sidestand length and lean angle. This extra extension may cause the sidestand to interfere with normal operation of the BMW centerstand.



ALWAYS extend the sidestand before deploying the BMW centerstand. If you don't, the **Puck-UP™** may interfere with the centerstand, making it difficult to deploy.



ALWAYS extend the sidestand before retracting the BMW centerstand or it may not retract completely because it's in contact with the **Puck-UP™**. In that event the centerstand may hang below the motorcycle and unexpectedly make contact with the road surface, resulting in a loss of control leading to serious injury or death.

Yeah, we know, these seem like dire warnings, full of doom and gloom. We want you to fully understand any risks involved.

BestRest assumes no responsibility for any damages or injuries that may occur as from using this product. Simply stated, you're using this product at your own risk. Your legal rights may vary from state to state, but if you're not willing to assume full and complete personal liability for the safe and proper use of this product, you shouldn't be using it. Return the product to BestRest for a refund. Refer to the return policy slip attached to your sales invoice for return authorization details.

### Installation

Please read ALL of these instructions before you begin. You'll be glad you did.

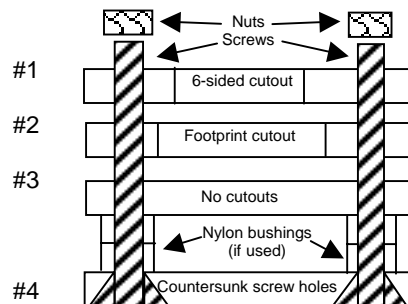
Put the motorcycle up on the centerstand. If you don't have a centerstand, secure it in some fashion so you can operate the sidestand freely.

Tools needed for installation:  
5/16" box end wrench  
Phillips screwdriver  
File or rasp  
Hacksaw or screw cutting pliers

The parts package contains:  
4 - screws, 10x24 threads  
4 - nylon locknuts, 10x24 thread  
12 - nylon spacer bushings, 1/4" high  
4 - aluminum Pucks

We will refer to the "sidestand foot"; this is the welded metal tab on the end of the stock BMW sidestand.

Stack the Pucks on top of each other in this sequence. For your convenience each Puck is marked with a number and UP.



1<sup>st</sup> - top clamping Puck w/ 6-sided cutout, fits over the BMW sidestand foot

2<sup>nd</sup> - sidestand Puck w/ cutout that exactly matches the BMW sidestand foot

3<sup>rd</sup> - intermediate Puck w/ screw holes only

4<sup>th</sup> - bottom Puck w/ 4 holes (countersunk from the bottom side)

See how Puck #2 fits onto the end of the BMW sidestand. When Puck #2 is in place, all the other Pucks will align with Puck #2.

Fit Puck #1 onto the sidestand foot. The 6-

sided cutout allows the sidestand foot to pass thru the hole. Tip Puck #1 and rotate gently until it fits. Don't force it, be patient as you work out the puzzle. This next photo shows the Puck slipping onto the sidestand foot; the Puck still needs to be rotated into position.



From the bottom, fit Puck #2 onto the sidestand foot. It's an exact match to the foot.

Drop Puck #1 down onto the top of Puck #2 and align the outside profile and screw holes. Puck #1 is a clamping plate, capturing the upper surface of the sidestand foot. If the welds on the top of the foot are interfering with the clamping Puck, use a file to relieve the Puck as needed. Do not file the welds on the sidestand.

Fit Puck #3 to the bottom of Puck #2.

Fit Puck #4 to the bottom of Puck #3.

This photo shows all the Pucks stacked and held in place by the screws.



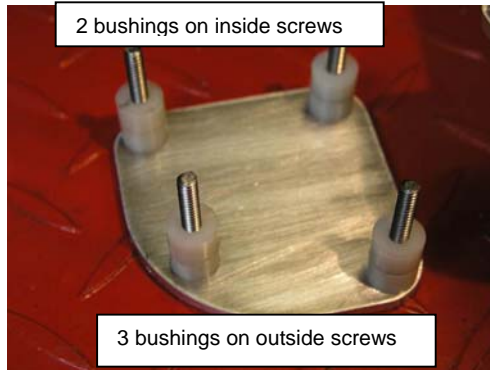
Flat nuts were used for photo purposes, but you'll be using nylon insert locknuts

Extend the sidestand and take the motorcycle off the centerstand. Experiment to determine if this setup provides sufficient height. This configuration does not normally interfere with the deployment or retraction of the centerstand.

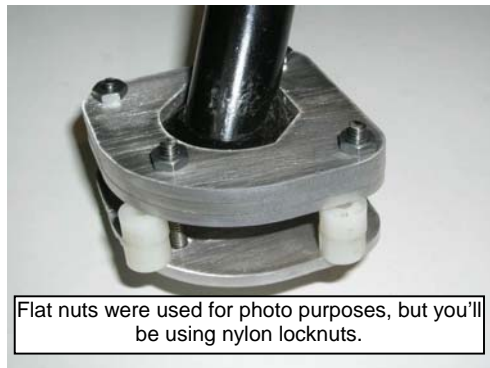
If you're satisfied with this configuration, tighten the screws and nuts. Use a hacksaw or screw cutters to trim the ends of the screws so they're flush with the top of the nuts. Your installation is complete.

Alternatively, if you wish to increase the height of the **Puck-UP™**, insert nylon spacer bushings between Puck #3 and Puck #4.

We recommend using a stack of 2 bushings on the inside holes, and a stack of 3 bushings on the outside holes. This causes the **Puck-UP™** to assume a slight angle, parallel to the ground.



For illustration purposes the spacers in the next photo are offset to show placement between the Pucks. During actual installation the screws would pass up thru the bushings.



Flat nuts were used for photo purposes, but you'll be using nylon locknuts.

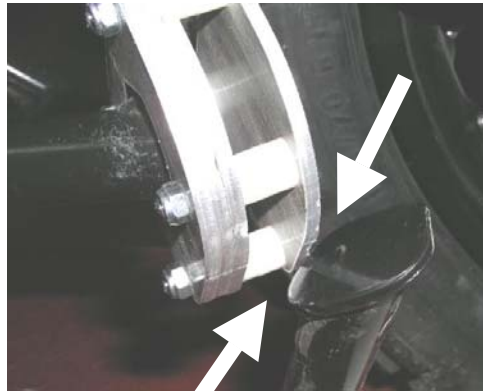
Once you've inserted the spacers, tighten the nuts and screws. Trim the ends of the screws flush with the ends of the nuts. Here's the finished installation.



The greater number of nylon spacers you use, the more upright the motorcycle will be when using the sidestand.

However, the extra length of the **Puck-UP™** results in a greater chance that the sidestand will interfere with the operation of centerstand.

In the next photo the end of the centerstand is hitting the **Puck-UP™**, preventing the centerstand from retracting fully.



If the sidestand is retracted BEFORE the centerstand, the centerstand hits the end of the **Puck-UP™** and the centerstand cannot retract normally.

Should this occur, and if you ride away with a partially deployed centerstand, it could unexpectedly come into contact with the ground, resulting in loss of control of the motorcycle! This is why it's important to extend the sidestand BEFORE you retract the centerstand.



Before riding away, always check for proper retraction of the centerstand.

Visit our online SmugMug photo repository to view larger images of the photos shown in these instructions:

[www.bestrest.smugmug.com](http://www.bestrest.smugmug.com)

### More Safety and Legal Notices

It's very important to check the screws, nuts, and Pucks for signs damage, metal fatigue, and/or loose or missing hardware. If these are discovered you should immediately remove the **Puck-UP™** from service until repairs can be made.

Do not proceed with product installation unless you are qualified to complete the installation in a safe fashion and as described herein. Do not use these products unless you have read all instructions and understand how these products work and what limitations, if any, they may have.

It is the responsibility of the Consumer to evaluate the suitability of these products for personal use. Consumers must evaluate whether these products meet their needs and whether these products can be mounted and used in a safe fashion. The Consumer accepts full and complete responsibility for selection of products and for mounting and maintenance of these products. The Consumer agrees to follow and abide by all instructions, warnings, recommendations, or

other information supplied or published by BestRest Products.

BestRest Products, its employees, agents, and owners assume no liability whatsoever for property damage, personal injury or other losses resulting from the Purchaser's failure to properly maintain the products, for unauthorized modifications of any kind, for use of unauthorized parts (including bushings, screws, nuts, or other fasteners), or for use of any BestRest Product in a fashion not intended by BestRest or described as a suggested application in BestRest literature.

Because installation of these products is done by others outside our control, we cannot assume any liability or responsibility whatsoever for improper or unsafe installation, or installation which is contrary to published instructions, for products that are improperly secured or maintained, or that are improperly tightened or otherwise secured, or which are otherwise improperly fitted to the motorcycle.

Only authorized, and approved replacement parts, assemblies, nuts, washers, screws, fasteners or fittings may be used when mounting, installing, or repairing any BestRest Product. Authorized replacement parts may be purchased only from BestRest Products. Parts from other sources or vendors are not covered under warranty and will void any Consumer claims against BestRest or others. Any use, modifications, or applications of any BestRest Product, other than those authorized by us in writing, are specifically prohibited.

BestRest products are warranty against defects in workmanship or materials for 90 days after purchase by the original retail customer. **Puck-UP™** systems that have been modified by the consumer are not covered under warranty. Warranty does not cover damage caused by collision or accidental causes.

**Puck-UP™** systems have been drilled, filed, or mounted to the motorcycle are not eligible for return. Items must be in "like-new" condition to be eligible for return.

For legal disclosures and a description of our warranty and return policy, please refer to our website:

[www.bestrestproducts.com](http://www.bestrestproducts.com)

[www.puck-up.com](http://www.puck-up.com)

"Puck-UP" is a trademark of BestRest Products, LLC

© 2008 BestRest Products LLC. All rights reserved. In the next photo, we've fitted 3 spacers.